

Flygtningenævnets baggrundsmateriale

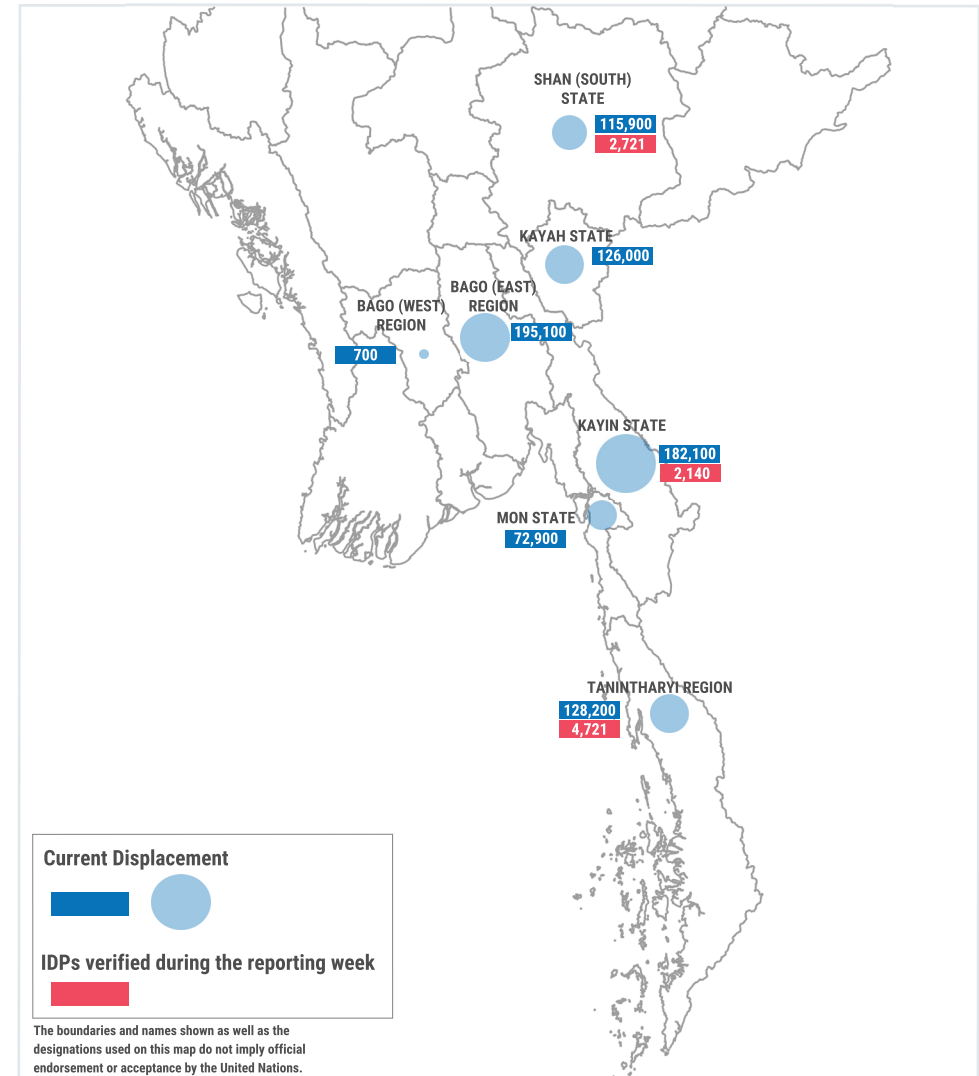
Bilagsnr.:	736
Land:	Myanmar
Kilde:	Office of the United Nations High Commissioner for Refugees (UNHCR)
Titel:	Myanmar South East - Emergency overview Map
Udgivet:	18. marts 2024
Optaget på baggrundsmaterialet:	3. april 2024

MYANMAR SOUTH EAST - EMERGENCY OVERVIEW MAP

Number of people displaced in South East since Feb 2021 and remain displaced

AS OF 18 Mar 2024

820,900⁽¹⁾
People who are estimated to be displaced by conflict in SE Myanmar (as of 18 Mar 2024).
Source: UN in Myanmar
Total Displaced - 1,205.8⁽²⁾



Current Displacement
IDPs verified during the reporting week

The boundaries and names shown as well as the designations used on this map do not imply official endorsement or acceptance by the United Nations.

(1) Current displacement accounting for return and secondary displacement
(2) Total Displacement including return
Numbers are rounded to the nearest hundred by state.

WEEKLY HIGHLIGHTS

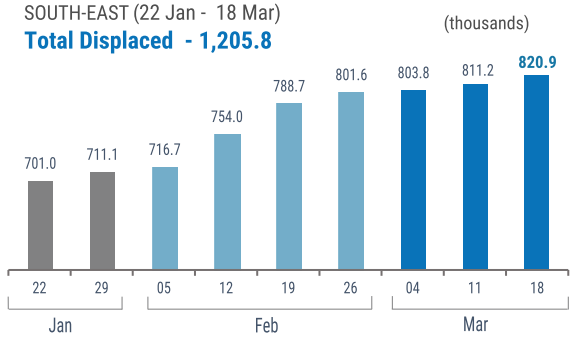
In the South-East, the number of internally displaced people (IDPs) slightly increased from 811,200 last week to 820,900 this week.

In Shan (South), 2,721 people from Hsihseng Town were displaced to Taunggyi Township due to increased fighting.

In Kayin State, 2,140 people from Hpa Lu Village Tract, Myawaddy Township were displaced within Myawaddy Township due to intensified fighting, including artillery shelling and airstrikes.

In Tanintharyi Region, 4,347 people from Dawei Township and 374 people from Kyunsu Township were displaced within their townships.

WEEKLY DISPLACEMENT FIGURES⁽¹⁾



WEEKLY DISPLACEMENT FIGURES⁽²⁾

