

Flygtningenævnets baggrundsmateriale

Bilagsnr.:	973
Land:	Sudan
Kilde:	Yale School of Pulic Health
Titel:	Day Two of RSF Control: Mass Killings Continue in EI-Fasher
Udgivet:	28. oktober 2025
Optaget på baggrundsmaterialet:	13. november 2025

HUMAN SECURITY EMERGENCY

Day Two of RSF Control: Mass Killings Continue in El-Fasher

28 October 2025

Yale SCHOOL OF PUBLIC HEALTH
Humanitarian Research Lab

© 2025 Humanitarian Research Lab at Yale School of Public Health.
Imagery © Airbus DS 2025, © 2025 Vantor.

This report was independently produced by the Yale School of Public Health's Humanitarian Research Lab. Learn more at <https://medicine.yale.edu/lab/khoshnood/>. Reports available at <https://medicine.yale.edu/lab/khoshnood/publications/reports/>.

The Faculty Director of the Humanitarian Research Lab (HRL) at the Yale School of Public Health is Dr. Kaveh Khoshnood. The analysis and production of this report was overseen by HRL Executive Director Nathaniel Raymond and Caitlin Howarth. Analysis and report production was conducted by the Humanitarian Research Lab's Conflict Analytics team.

Citation | Raymond, Nathaniel A., Howarth, Caitlin et al. "HUMAN SECURITY EMERGENCY Day Two of RSF Control: Mass Killings Continue in El-Fasher." 28 October 2025. Humanitarian Research Lab at Yale School of Public Health: New Haven.

I. Key Findings

The Yale School of Public Health's Humanitarian Research Lab (HRL) corroborates evidence of continuing mass killing in the past 48 hours since RSF took control of El-Fasher. These mass killing events include corroboration of alleged executions around Saudi Hospital and a previously unreported potential mass killing at an RSF detention site at the former Children's Hospital in eastern El-Fasher. Yale HRL concludes that systematic killing in the vicinity of the earthen wall, hereafter berm, outside the city is continuing.

Mass Killing at Former Children's Hospital, El-Fasher (13.6217898, 25.3826549)

Yale HRL finds evidence consistent with mass killing at the former Children's Hospital in the east of El-Fasher, North Darfur. This site has been under RSF control and has not been operational as a health facility for over a year. Satellite imagery collected on 27 October 2025 shows lines of dark-colored objects consistent with groups of people stretching from the building to the gate of the compound and a group of people near the same gate. The activity is not visible in satellite imagery collected the previous day.

Satellite imagery collected the next day, on 28 October 2025, shows a large group of slightly larger dark objects with the same color as those in the line and grouping the previous day. The majority of these objects are visible near the entrance of the compound. This activity may be consistent with large groups of people being present on 27 October 2025, subsequently killed, and their bodies visible in satellite imagery on 28 October 2025.

A grouping of white objects is visible in the southeast corner of the facility in satellite imagery collected on both 26 and 27 October 2025. There are significantly more white objects visible across the compound in satellite imagery collected on 28 October 2025.

Apparent Mass Killing at Saudi Hospital (13.629694679116708, 25.329653418909288)

Yale HRL corroborates a report that RSF conducted mass killings at the Saudi Hospital and surrounding areas.¹ The El-Fasher Resistance Committee alleged that mass killings occurred at and around the Saudi Hospital.² Satellite imagery collected on 28 October 2025 shows the presence of apparent white objects on the grounds of the Saudi Hospital facility itself. They include three clusters of white objects positioned contiguous with the southern wall of three buildings within the hospital compound and the presence of additional vehicles. The white objects in two of the three locations have dimensions of approximately 1.1-1.9 meters long.

There are two groupings of white objects with reddish discoloration on the ground located approximately 75 meters west of the Saudi Hospital facility walls. One grouping contains two objects with a C- or J-shape that measure 1.7 and 1.5 meters,

respectively; there is a third, smaller object measuring approximately 1.2 meters near the object measuring 1.7 meters. The presence of objects consistent with the dimensions of a human body lying horizontally and also have C- and J-shaped attributes is corroborative of potential human remains: the C- or J-shape indicates bending at the waist and/or knee joints. The second grouping of white objects with reddish ground discoloration nearby cannot be differentiated at this time. The presence of potential kill sites in the area surrounding Saudi Hospital is consistent with the public statement from the El-Fasher Resistance Committee.

The El-Fasher Resistance Committee reported on 28 October 2025 that “[a]ll the wounded and injured inside the “Saudi Hospital” and the “First-Class Wards” and the “University” and the “Interior Ministry” have been collectively liquidated by the Rapid Support Militia in horrific ways”.³ The Sudan Doctors Network reported that RSF “kidnapped 6 medical personnel, including 4 doctors, a pharmacist, and a nurse...[and] demand[ed] a ransom of 100 million Sudanese pounds per doctor.”⁴

Systematic Mass Killings of People along the Berm

Yale HRL finds evidence consistent with systematic mass killings of people outside El-Fasher along the berm in satellite imagery collected on 27 and 28 October 2025.

Yale HRL identifies six of groupings of light-colored objects measuring approximately 1.3-2.0 meters long in the open area west of Daraja Oula visible in satellite imagery. These groupings of objects are clustered along a dirt road that runs north and south parallel to the city. These objects are located north of those Yale HRL identified as consistent with bodies near the earthen wall in previous reporting.⁵

At least five of the six groupings have reddish discoloration on the ground nearby. All six of the object groupings first appeared in satellite imagery collected on 27 October 2025; by 28 October 2025 all groupings were still visible. Two of the groupings increased in number in satellite imagery collected between 27 and 28 October 2025. There are at least five RSF-consistent technical vehicles visible at these groupings in satellite imagery on 27 or 28 October 2025; at least one vehicle is a gun-mounted technical type vehicle. RSF and its aligned forces is the only armed actor with control of the documented terrain during this period.

The objects visible at these groupings are consistent with the dimensions of human bodies. They are located approximately 300 meters from the earthen wall, or berm, that RSF built entrapping El-Fasher.

Open sources corroborate reports of RSF mass killings near the berms, including mass killings of men. A survivor now in Tawilah reported that after her family reached the berm through RSF fire, RSF separated the men out and shot some of them in front of the women before taking the women across the berm. The women were told that the rest of the men would follow; the women heard more gunshots and did not see the men again.⁶ Other sources have reported that men are put on trucks and taken away.⁷

It is highly likely that the phenomena seen in satellite imagery is consistent with RSF rounding up and killing people trying to flee El-Fasher. Yale HRL's conclusion that these objects in this location are consistent with reports of RSF killing those attempting to flee El-Fasher is based on four analytic findings:

- (1) These objects measure approximately 1.3 – 2.0 meters, which is the expected range of a human body of average height lying horizontally;
- (2) These objects were not present in this area prior to RSF's control of El-Fasher on Sunday 26 October 2025.
- (3) The numbers of these objects have increased in the past 48 hours; and
- (4) RSF-consistent vehicles, including one with a mounted weapon, are seen present alongside these objects consistent with the length of a human body lying horizontally, including in some cases with reddish ground discoloration which may be consistent with blood.

Yale HRL is unable to identify an alternative hypothesis to explain the presence of these objects in these positions in this time, particularly in light of RSF-published videos showing behavior by RSF forces consistent with mass killing.

Red Crescent Society of Sudan (RCS) Office, El-Fasher
(13.629489605115484, 25.356066434927207)

Yale HRL observes activity at the Red Crescent Society of Sudan (RCS) Office in El-Fasher in satellite imagery collected between 27 and 28 October 2025. Satellite imagery collected 28 October 2025 shows objects of various colors and sizes visible on the southern grounds of the Red Crescent Society of Sudan (RCS) Office in El-Fasher. These objects were not visible in satellite imagery collected the previous day on 27 October 2025. Some visible objects measure approximately 1.3-2 meters in length. A 28 October 2025 *Darfur24* article stated that the “headquarters of the Sudanese Red Crescent...was stormed by gunmen, who forced the medical staff to board combat vehicles and took them to an unknown destination;”⁸ the article did not state the date of this event.

II. Human Security Analysis

The data and analysis presented in this report further corroborates Yale HRL's 27 October finding that large-scale mass killing has been occurring in El-Fasher since likely Sunday 26 October 2025, following RSF's takeover of the city. These mass killings include an instance at the former Children's Hospital, which has served as an RSF detention center and then a designated mass killing site between 27-28 October 2025, Saudi Hospital, and apparent attacks on people attempting to flee to safety. The scale these mass killings cannot currently be communicated in satellite imagery alone and it is highly likely that any estimates of the total number of people who RSF has killed are undercounted.⁹

This report also identifies potential evidence of the distinct alleged war crime of targeted attacks on health facilities, health workers, patients, and humanitarian aid

workers. These facilities, professionals, and people receiving healthcare and assistance have special protection under the Articles of the Geneva Convention. The RSF has claimed repeatedly that certain groups of civilians are combatants in the past. There can be no doubt, however, that the individual professionals and the facilities at which they work documented in this report are protected from attack, harassment, and killing under the laws of armed conflict. These specific, targeted attacks alleged by civil society groups and corroborated, in part, by this report demand immediate investigation and require full accountability for those who allegedly perpetrated them.

III. Methodology

Yale HRL utilizes data fusion methodologies of open source and remote sensing data analysis. Yale HRL produced this report through the cross-corroboration of open source data, including social media, local news reporting, multimedia, and other reports, and remote sensing data, including satellite imagery and thermal sensor data. Researchers analyzed open source data across social media, news reports, and other publicly available sources to identify, chrono- and geolocate, and verify incidents. Analysts assess the credibility and reliability of open source data based on a source's level of detail, past credibility, and the corroboration of other independent sources. Remote sensing and satellite imagery analysis relies on multi-temporal change detection, which involves the comparison of two or more satellite images of the same area captured at different times to detect differences in coloration, visual properties, and presence, absence, or positional change of objects across the images.

Limitations

There are significant limitations to the data fusion methodology. The information environment in Sudan does not have the breadth of data available in other locations and there is likely a significant reporting bias for those who provide open source reporting. The tools and techniques present significant challenges to assess activities such as extrajudicial detention, conflict-related sexual violence (CRSV), and conflict-related casualties, particularly in environments with limited data. Satellite imagery analysis is limited by available imagery over time and space. Available nadir angles of satellite imagery can produce challenges to assess structural damage, until multiple angles and ground-level photographic and video materials emerge to help inform the analysis. Image resolution level can also limit the analyst's ability to perceive the full extent of damage present.

¹ Mohanad (@MohanadElbalal) "Reports emerging that RSF militiamen have entered the Saudi teaching hospital in Al Fashir and killed all the sick and wounded." X, formerly known as Twitter, 28 October 2025. <https://x.com/MohanadElbalal/status/1983231462250819908>, archived at <https://perma.cc/G7QQ-TEML>

² Sudan War Updates (@sudan_war) “عاجل |تنسيقية لجان المقاومة الفاشر” X, formerly known as Twitter, 28 October 2025. https://x.com/sudan_war/status/1983226563635118394, archived at <https://perma.cc/5CGG-JSQN>;

Coordination of Resistance Committees – El Fasher. “كل الجرحى والمصابين داخل المستشفى السعودي.” Facebook. 28 October 2025. <https://www.facebook.com/share/1BgBTGHy2e/> archived at <https://archive.ph/myWDM>.

³ Sudan War Updates (@sudan_war) “عاجل |تنسيقية لجان المقاومة الفاشر” X, formerly known as Twitter, 28 October 2025. https://x.com/sudan_war/status/1983226563635118394, archived at <https://perma.cc/5CGG-JSQN>;

Coordination of Resistance Committees – El Fasher. “كل الجرحى والمصابين داخل المستشفى السعودي.” Facebook. 28 October 2025. <https://www.facebook.com/share/1BgBTGHy2e/> archived at <https://archive.ph/myWDM>.

⁴ Sudan Doctors Network (@SDN154) “شبكة أطباء السودان: الدعم السريع تختطف 6 من الكوادر الطبية بالفاشر وتطالب” X, formerly known as Twitter, 28 October 2025. <https://x.com/SDN154/status/1983036040991424936>, archived at <https://perma.cc/QRU4-U3TC>

Trauma Rescue Aid – TRAIID (@TRAID24) “On Oct 26, a nurse was killed & 3 health workers injured at Saudi Maternity Hospital” X, formerly known as Twitter, 28 October 2025. <https://x.com/traid24/status/1983259880338403436?s=46&t=BGwGfC4QtBMA5ekt8jpSOg>, archived at <https://perma.cc/Q2ED-L546>.

⁵ Raymond, Nathaniel A., Caitlin Howarth, et al. “HUMAN SECURITY EMERGENCY El-Fasher Falls to RSF: Evidence of Mass Killing,” 27 October 2025. Humanitarian Research Lab at Yale School of Public Health: New Haven. <https://files-profile.medicine.yale.edu/documents/876b4afc-e1da-495b-ac32-b5098699a371>, archived at <https://perma.cc/ST2E-644R>

⁶ Nafisa Eltahir, Abdelaziz, Khalid “Escapee describes summary killings after Darfur city’s fall” Reuters, 28 October 2025. <https://www.reuters.com/world/africa/escapee-describes-summary-killings-after-darfur-citys-fall-2025-10-28/>, archived at

⁷ Mohanad Hashim (@moehash1) “This is how bad it is. Survivors say men are put on trucks” X, formerly known as Twitter, 28 October 2025. <https://x.com/moehash1/status/1983254694345769095>, archived at <https://perma.cc/X2WL-MMHC>

⁸ Darfur24. “مصير مجهول للمرضى في الفاشر بعد فرار الأطباء والمرافقين.” Darfur24, 28 October 2025. <https://www.darfur24.com/2025/10/28/%d9%85%d8%b5%d9%8a%d8%b1-%d9%85%d8%ac%d9%87%d9%88%d9%84-%d9%84%d9%84%d9%85%d8%b1%d8%b6%d9%89-%d9%81%d9%8a-%d8%a7%d9%84%d9%81%d8%a7%d8%b4%d8%b1-%d8%a8%d8%b9%d8%af-%d9%81%d8%b1%d8%a7%d8%b1-%d8%a7%d9%84/>, archived at <https://perma.cc/R5XP-WT7S>

⁹ “Mass killings reported in Sudanese city seized by paramilitary group” The Guardian 28 October 2025 https://www.theguardian.com/world/2025/oct/28/mass-killings-reported-el-fasher-sudan-paramilitary-group-rapid-support-forces?CMP=Share_iOSApp_Other, archived at <https://perma.cc/JD4C-NAGS>; HRL_MMC_143, redacted for human security concerns.

Former Children's Hospital, El-Fasher CROWDING AND OBJECT DISPOSAL OBSERVED BETWEEN 26-27 OCTOBER 2025 AND 28 OCTOBER 2025

In satellite imagery collected on 27 October 2025, clusters of dark colored objects consistent with people create a large queue outside the former Children's Hospital, stretching from the building to the gate of the compound. Across the street, a new cluster of white objects appear that are not seen in prior imagery collected on 26 October.

In imagery collected on 28 October 2025, dark colored objects of a similar size and color as the queue seen in previous imagery now appear tightly grouped together. In the same image, a new set of light-colored objects appears in the southeast corner of the compound. Across the street, the object cluster appears to grow in number.



26 October 2025 © 2025 Vantor



27 October 2025 © Airbus DS 2025
12.079599, 24.96037



28 October 2025 © Airbus DS 2025

Al-Saudi Hospital, El-Fasher

LIGHT-COLORED OBJECTS OBSERVED ON 28 OCTOBER 2025

Baseline analysis of satellite imagery collected on 27 October 2025 of the Al-Saudi Hospital in the Daraja Oula neighborhood of El-Fasher shows no visible clusters of light-colored objects at these sites as of the day prior on 27 October 2025.

13.6299513, 25.3296989



27 October 2025 © Airbus DS 2025



27 October 2025 © Airbus DS 2025



27 October 2025 © Airbus DS 2025



27 October 2025 © Airbus DS 2025



27 October 2025 © Airbus DS 2025



28 October 2025 © Airbus DS 2025

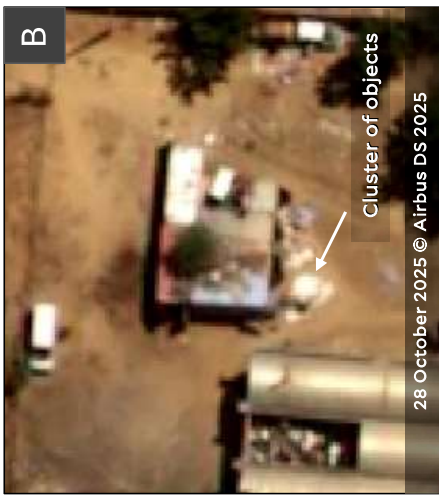
Al-Saudi Hospital, El-Fasher

LIGHT-COLORED OBJECTS OBSERVED ON 28 OCTOBER 2025

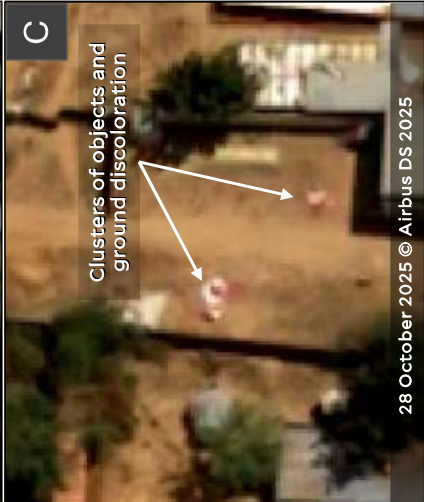
Analysis of satellite imagery collected on 28 October 2025 of the Al-Saudi Hospital in the Daraja Oula neighborhood of El-Fasher shows at least four new clusters of light-colored objects that were not visible in prior imagery. Some white colored objects measure approximately 1.1-1.9 meters, although some objects appear more homogenous in color, making size measurement difficult. The light-colored objects in group C appear with reddish discoloration of the ground nearby.



28 October 2025 © Airbus DS 2025



28 October 2025 © Airbus DS 2025



28 October 2025 © Airbus DS 2025



28 October 2025 © Airbus DS 2025

Red Crescent Society of Sudan (RCS), El-Fasher
**NEW OBJECTS OBSERVED BETWEEN
27-28 OCTOBER 2025**

Analysis of satellite imagery collected on 28 October 2025 of the Red Crescent Society of Sudan (RCS) of El-Fasher, new white and dark colored objects appear that are not previously seen in prior imagery from 27 October 2025. Some visible objects measure approximately 1.3-2 meters in length.

13.63056657, 25.3337841



27 October 2025 © Airbus DS 2025



28 October 2025 © Airbus DS 2025

El-Fasher 15 October 2025

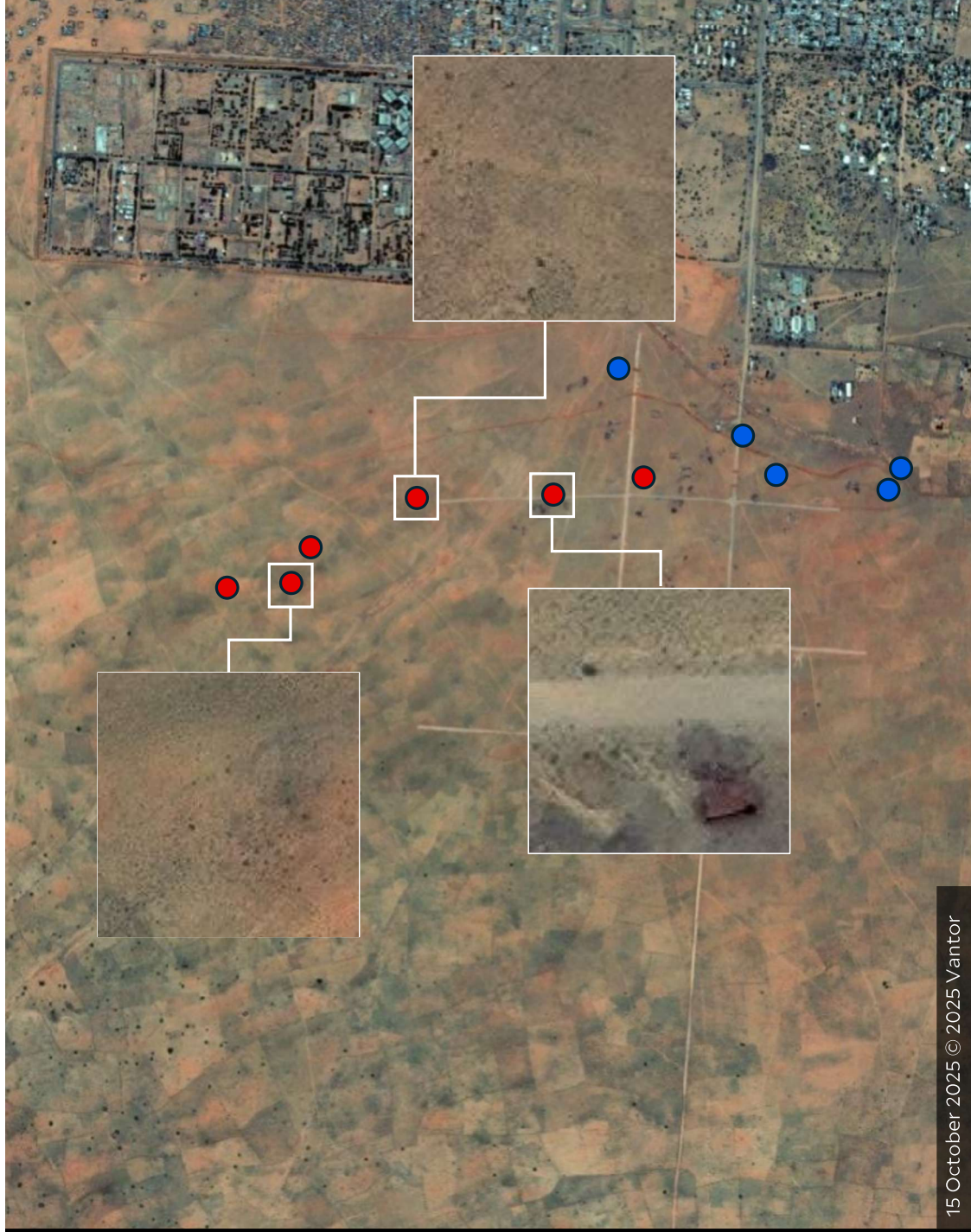
Baseline assessment

13.6474933, 25.3081181

- Cluster of objects previously reported on by Yale HRL on 27 Oct 2025
- Cluster of objects reported by Yale HRL on 28 Oct 2025

Imagery collected over the west of El-Fasher on 15 October 2025 shows no visible clusters of objects beyond the city's encircling berm.

Yale SCHOOL OF PUBLIC HEALTH
Humanitarian Research Lab



15 October 2025 © 2025 Vantor

El-Fasher 27 October 2025

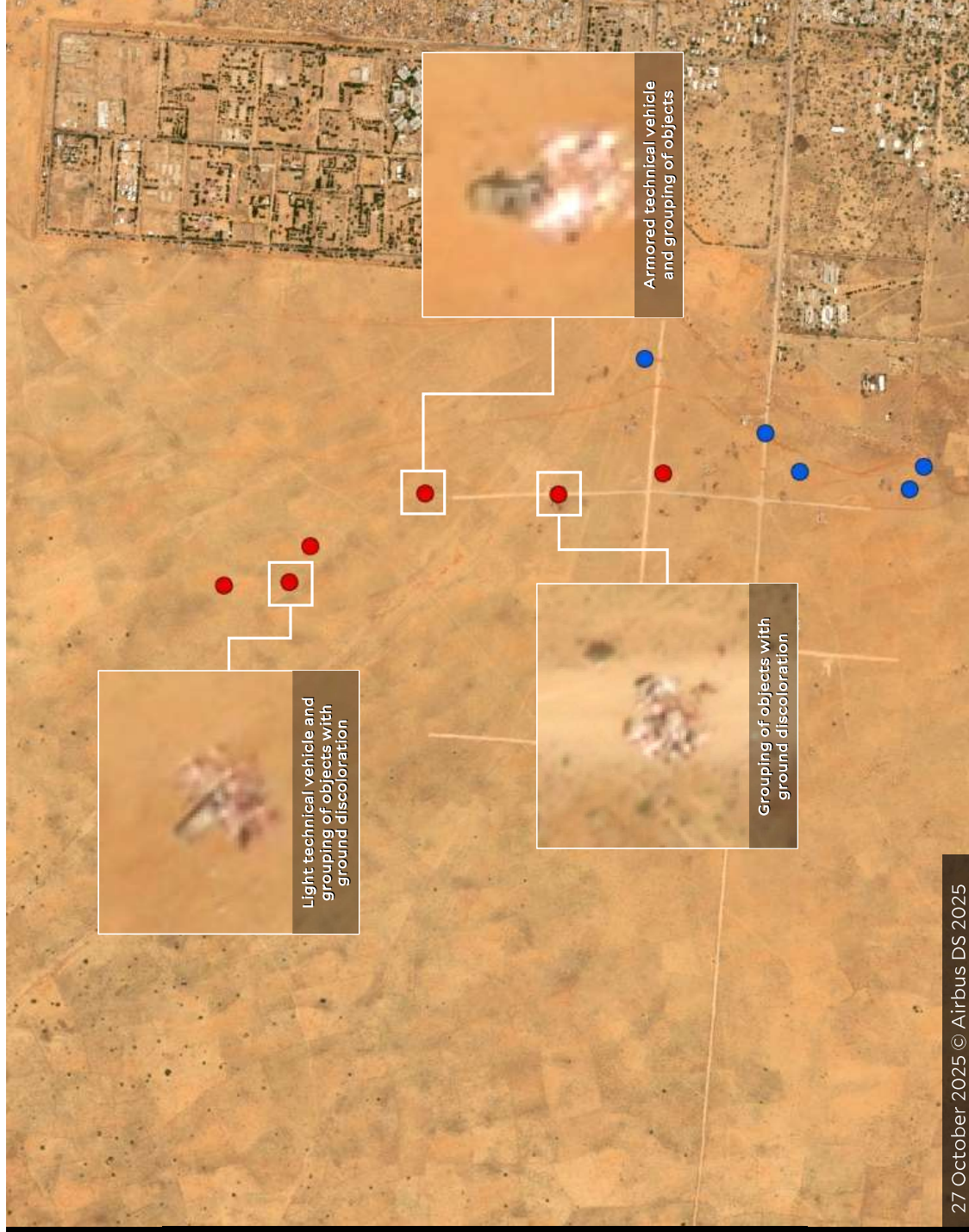
Technical vehicles, clusters of objects, and ground discoloration

13.6474933, 25.3081181

- Cluster of objects previously reported on by Yale HRL on 27 Oct 2025
- Cluster of objects reported by Yale HRL on 28 Oct 2025

Imagery collected over the west of El-Fasher on 27 October 2025 shows clusters of objects along the city's encircling berm following a path heading north. These objects are not visible in imagery collected on 26 October 2025 and the appearance of these objects coincides with reports that civilians were chased with vehicles and shot while attempting to flee El-Fasher.

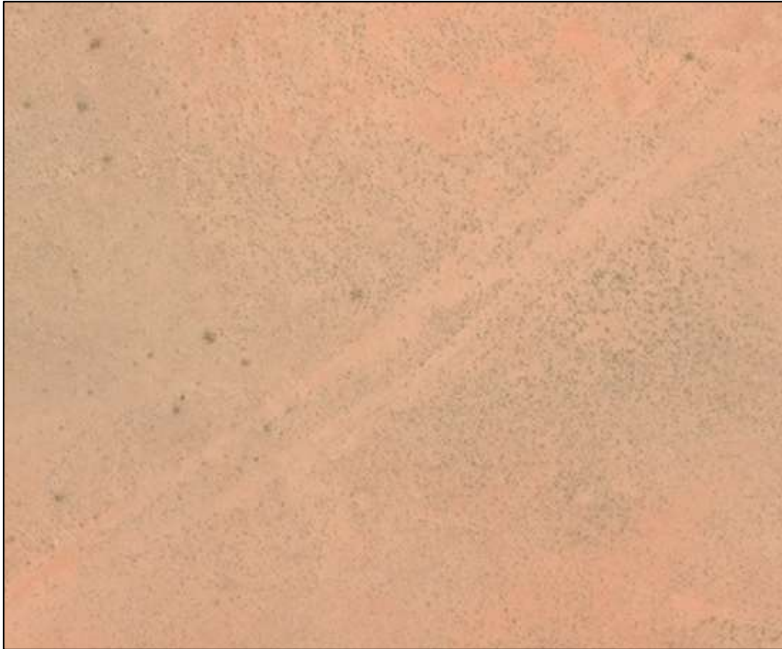
Yale SCHOOL OF PUBLIC HEALTH
Humanitarian Research Lab



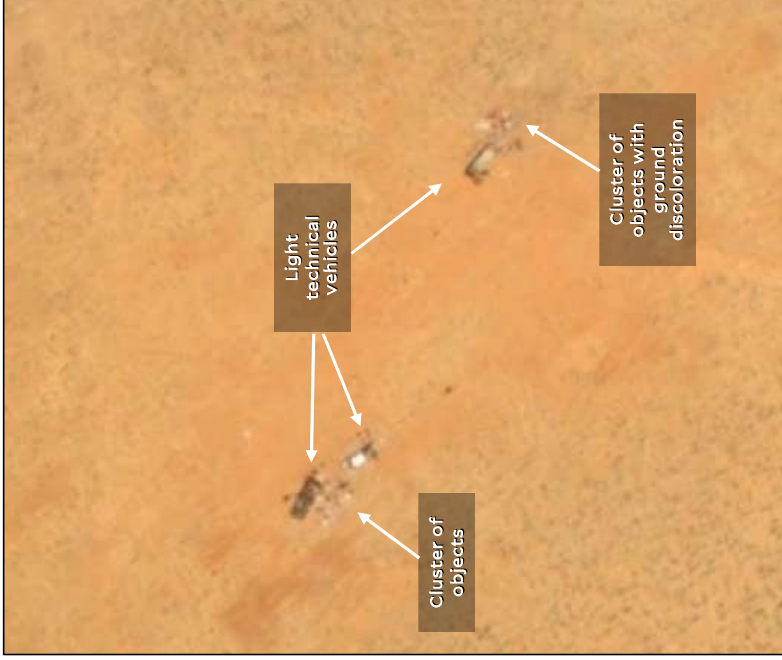
El-Fasher, West of Former UNAMID Compound LIGHT TECHNICAL VEHICLES AND CLUSTERS OF OBJECTS OBSERVED 26-27 & 28 OCTOBER 2025

Analysis of satellite imagery collected initially between 25 and 27 October 2025 shows the new presence of three light technical vehicles and two clusters of objects next to these vehicles. One cluster of objects is surrounded by a reddish ground discoloration.

Further analysis of imagery collected 28 October 2025 of this location shows the same cluster of objects remain with the light technical vehicles no longer present.



25 October 2025 © 2025 Vantor



27 October 2025 © Airbus DS 2025

13.6515193, 25.3072148



28 October 2025 © Airbus DS 2025

Yale SCHOOL OF PUBLIC HEALTH
Humanitarian Research Lab

[About](#) | [Reports](#) | [Support](#)